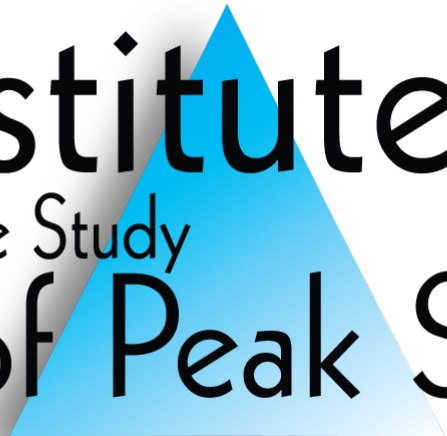


The Primary Cell:

Understanding the sub-cellular basis of
consciousness, spiritual experiences,
trauma and disease

By Dr. Grant McFetridge (Canada), and Tal Laks (Israel)

Institute
for the Study
of Peak States

The logo consists of a light blue triangle pointing upwards, positioned behind the text. The text is arranged in three lines: 'Institute' in a large, bold, black sans-serif font; 'for the Study' in a smaller, black sans-serif font; and 'of Peak States' in a large, bold, black sans-serif font. The triangle is centered behind the text, with its top vertex pointing towards the top of the word 'Institute'.

Evidence-Based Spirituality

- Models of spirituality need to be compatible with modern biology and science.
- They need to incorporate all phenomena - without ignoring 'inconvenient truths'.
- They need to explain all existing data, and predict new.
- Applications are a key test for validity.

Radio waves are also like this...

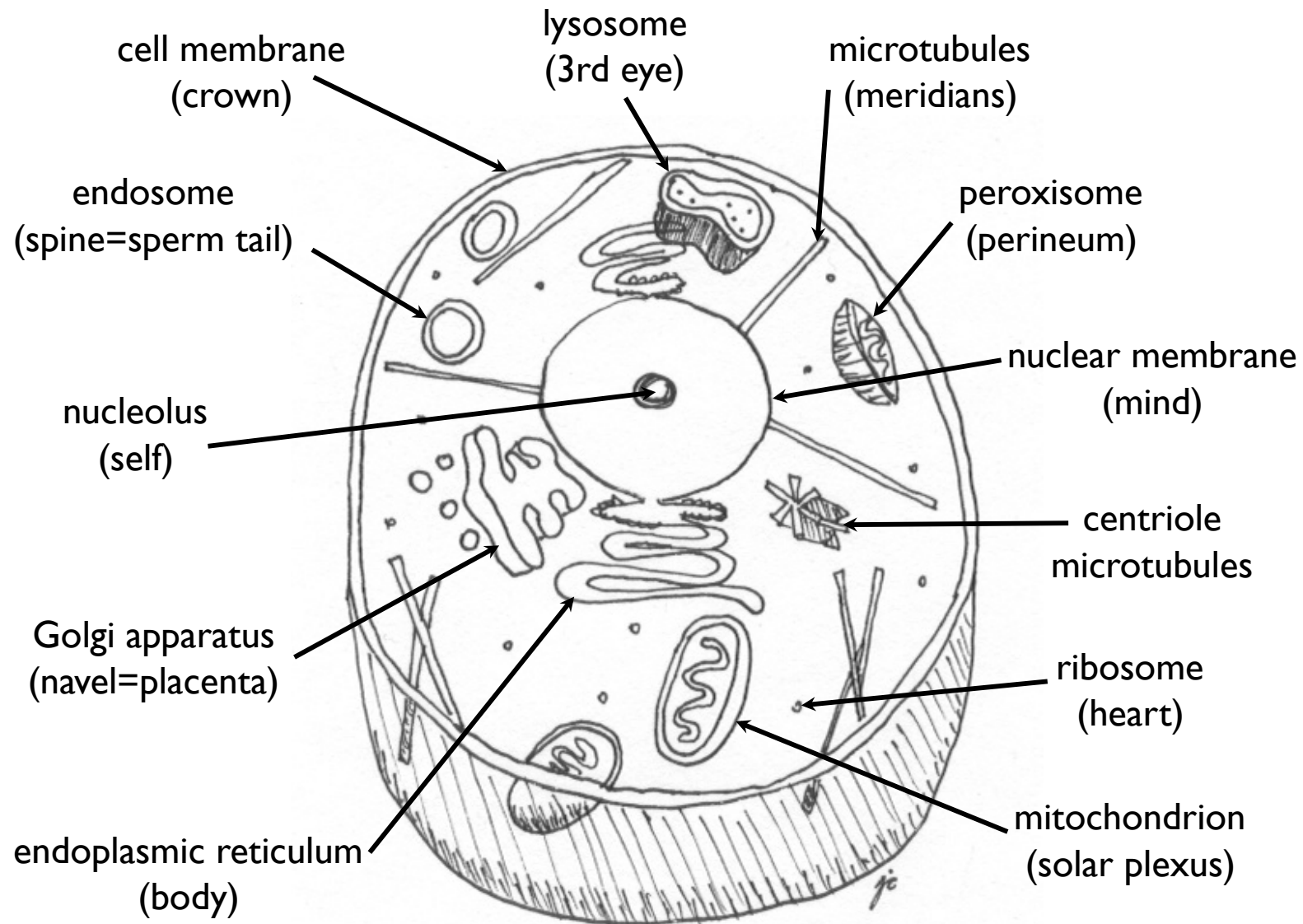
- Models of electromagnetic waves - you can't see or touch them either, yet you can apply models to make powerlines and cell phones.
- Thus, if a model is correct, we can make things that work, and predict new phenomena - like Einstein's prediction of light bending around the sun.

Regression Observations

- WHH, EMDR, TIR, etc.
- Cellular Memory - we are not 'tabula rasa' at birth. Current models can't explain this.
- Peak states of consciousness are lost due to trauma. They represent optimal cell function - they are 'normal' states.
- Consciousness is build from biological components that feel spiritual or sacred.

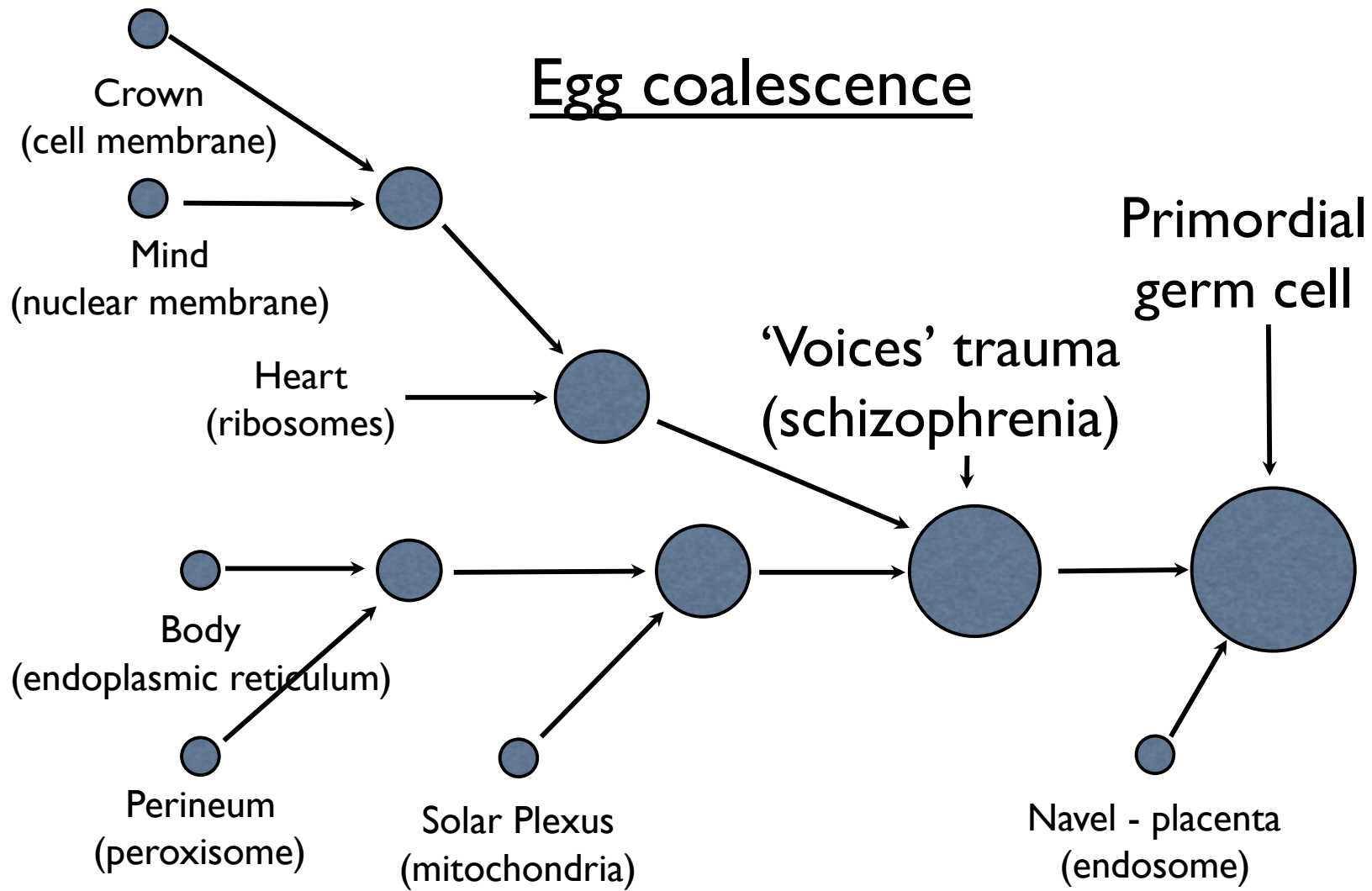
Triune Brains

- Triune brains (mind, heart, body, etc.) are the origin of the ‘subconscious mind’.
- The triune brains are self aware, and have biologically dictated agendas.
- The triune brains are actually the consciousnesses of different cell organelles.
- The triune brains should actually be unified in one awareness.



Coalescence

- Margulis' Serial Endosymbiotic Theory is recapitulated in human development.
- Seven very different bacteria-like cells 'coalesce' to form the primordial germ cell.
- Coalescence is not recognized by biologists.
- It is repeatable (via regression), and is useful - it is used to eliminate schizophrenic 'voices'.



Prenatal trauma explains a lot, but...

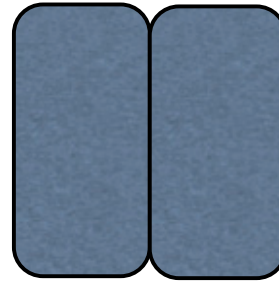
- Some client experiences are clearly in the present, not the past.
- And just what are spiritual/sacred/psychic phenomena? Are they biological?

The Primary Cell

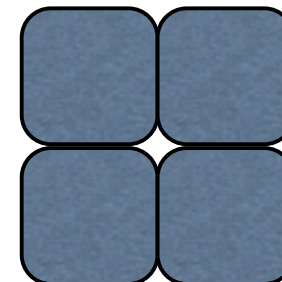
- At conception, your self-consciousness forms.
- However... Just a bit later at the forth cell devision, something very unique happens.
- All your awareness consolidates into just one cell - the 'primary cell'.
- There is a severe death trauma at this developmental event. Thus, this event is almost always 'skipped' in regressions.



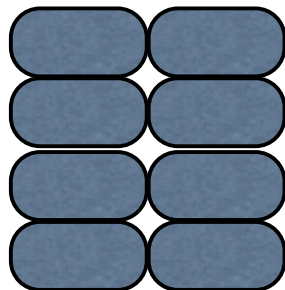
Conception



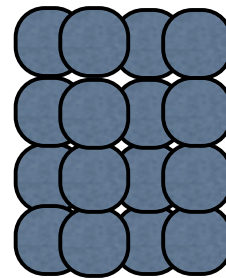
First cell
division



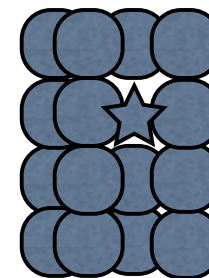
Second cell
division



Third cell
division

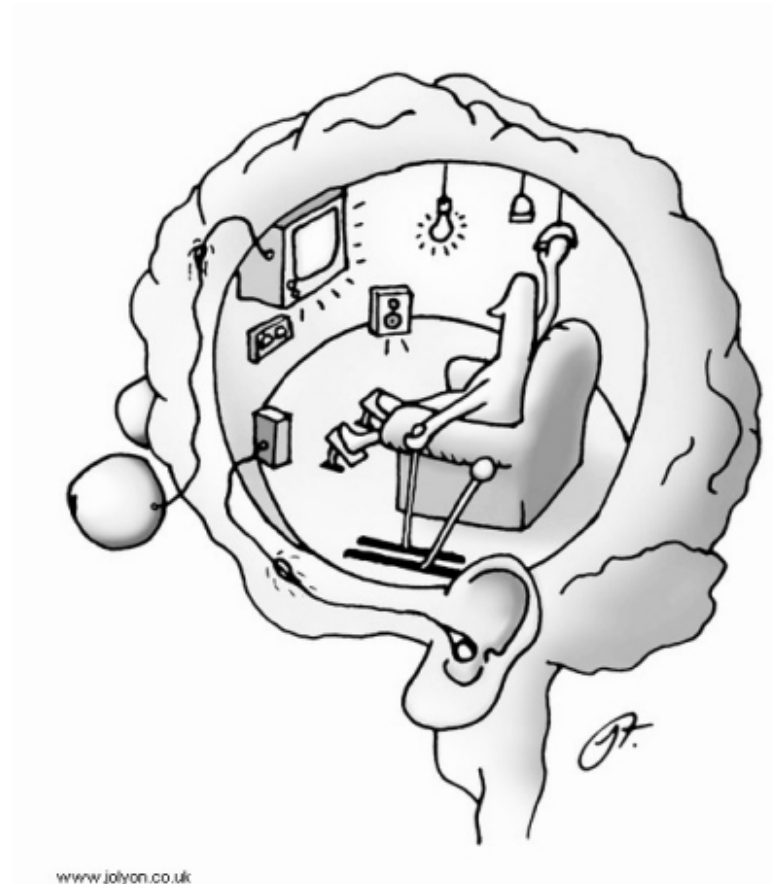


Forth cell
division



Creation of the
primary cell

There is a homunculus after all!



The primary cell interior is superimposed on our perceptions

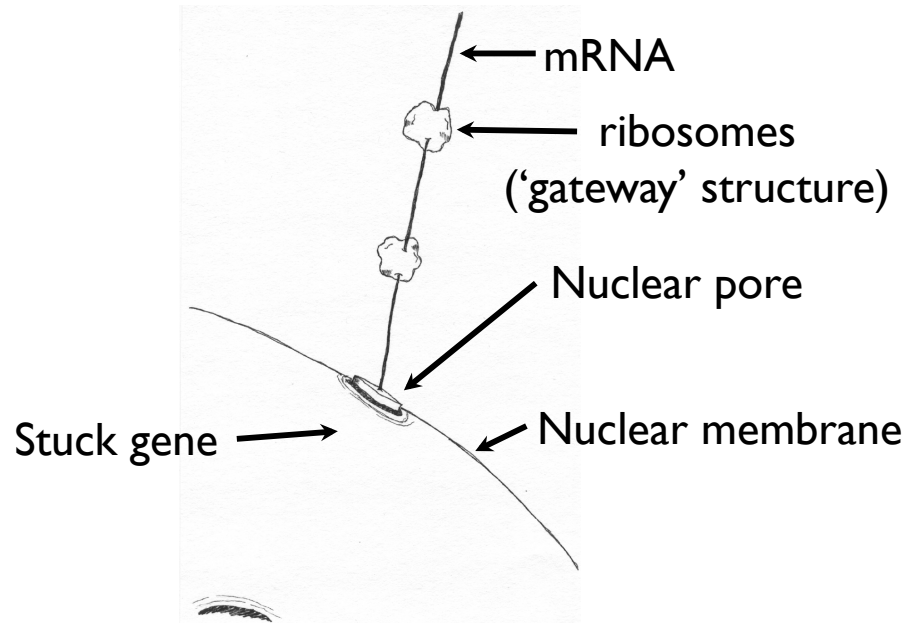
- The primary cell interior is observable by accident or on purpose. Once shown how, more than half of the population can 'see' in the primary cell.
- There is a primary cell in all creatures - the Tibetan Buddhists are correct in seeing all life as the same. Only the multi-cellular 'peripherals' differ.
- Spiritual, shamanic or psychic phenomena are based on biological structures in the primary cell. There is a duality of vision - either biological, or 'spiritual' (or via triune brains' awarenesses).

Safety Problems

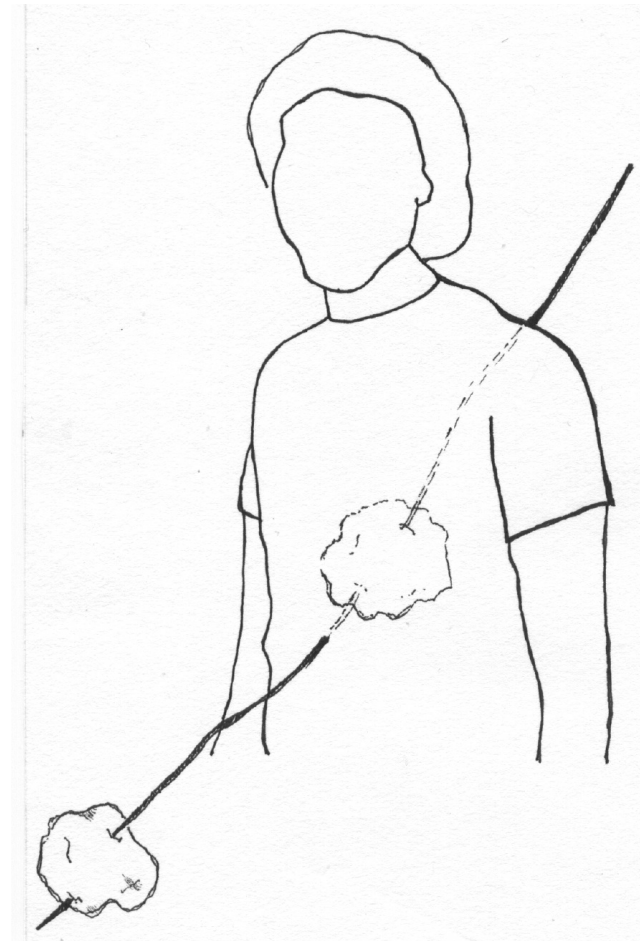
- Working with the primary cell is like being able to look under the hood of your car while it is running. Unfortunately, it is possible to damage yourself by ‘meddling’ with your primary cell.
- Regression too can be dangerous. There are ‘land mine’ developmental events that can trigger severe or fatal problems in some people. Or attempting to heal can trigger secondary problems.
- About 50% of our research staff has been seriously injured or killed during this

What is trauma?

- Trauma is epigenetic damage in the primary cell.
- The histones are damaged, causing the mRNA string to 'jam' in the nuclear pore.
- Ribosomes attach - each time the protean was needed.
- Each ribosome is a gateway to a trauma moment.
- Ribosome trauma sensations are superimposed in our awareness along with our normal, physical perceptions of



Trauma 'string'
(in the primary cell)



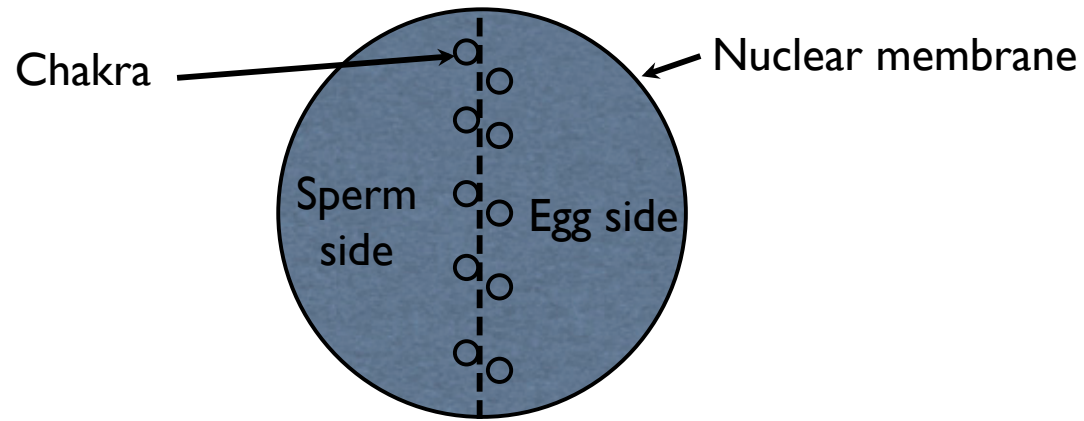
Trauma sensation
(ribosome is superimposed on body image)

The different types of

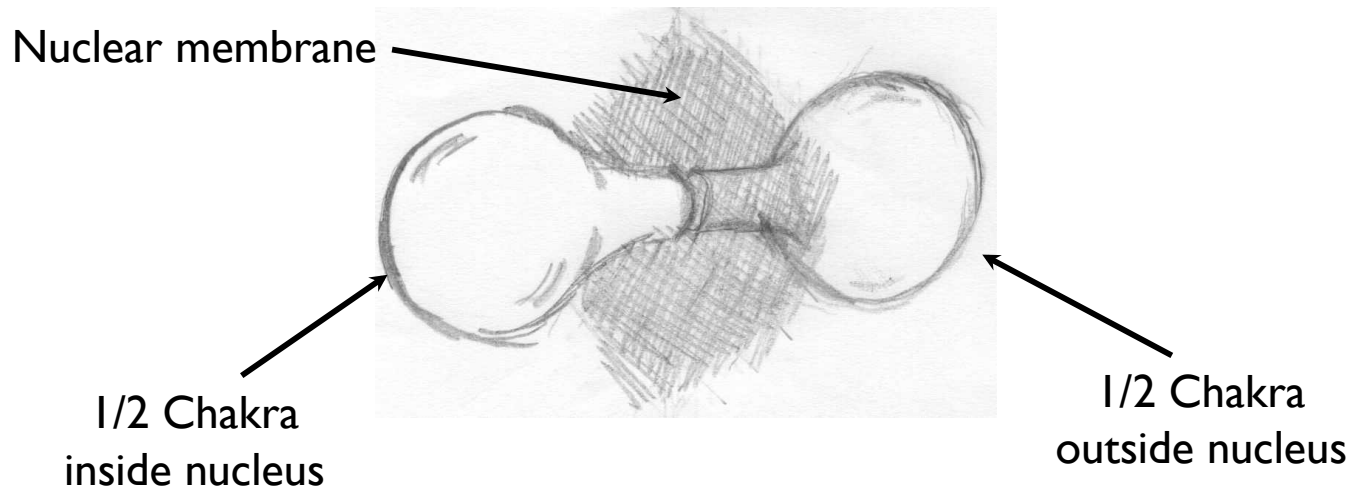
- **trauma structures**
Stuck perineum and 3rd eye p-organelle genes cause generational traumas (that look like pearls on a string)
- Stuck body p-organelle genes cause body associations (ribosomes in the ER)
- Stuck heart p-organelle genes cause simple trauma (ribosomes on mRNA string)
- Damaged histones from solar plexus gene p-organelle cause vortexes in mitochondrion.
- Past-life traumas exist; these 'gateway' structures attach to trauma strings

What are chakras and

- Chakras are structures on the nuclear membrane at the sperm/egg junction. There is one per triune brain - but they can be missing or damaged.
- If partially developed, the chakras from the sperm and egg stay separate. If further developed, egg and sperm chakras fuse. If even further developed, they all consolidate.
- Meridians are primary cell microtubules. They attach to the chakras and to the cell membrane.



Nucleus



Chakra closeup

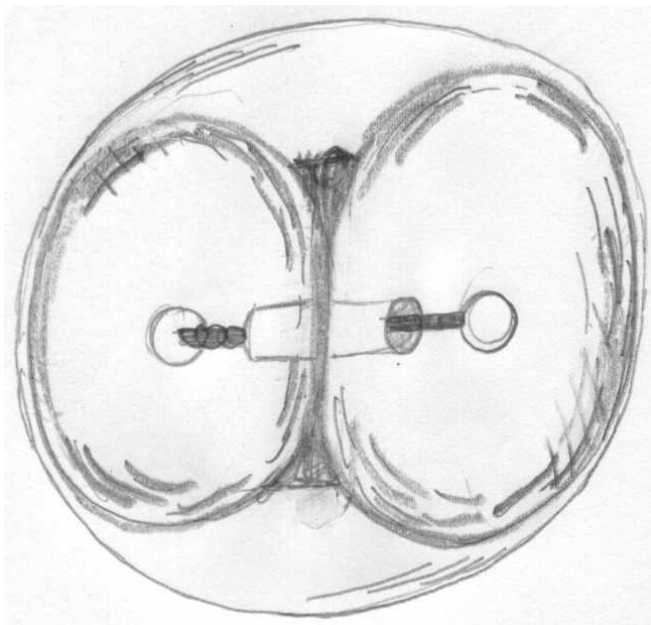
- **How tapping works**
Tapping stimulates the primary cell tubules, which in turn stimulate the chakra structures.
- This causes 'broken crystals' in the chakras (they containing emotional content) to re-connect and lose their trauma feelings.
- This simultaneously affects the trauma strings. Depending on the points tapped, either the ribosomes shrink, and/or the gene histone gets healed. The 9 gamut point is optimum for histones.
- Unlike tapping, regression *directly* affects trauma strings; it indirectly affects the chakra's 'broken crystals'

Where is our self??

- A person's self awareness is inside the 'nuclear core' inside the nucleolus.
- Inside is a 'ring'; a merkaba is inside it; and a pyramid inside that; as well as other structures. Our core self is inside these.
- Our 'self' is build up of various materials that combine serially during early development.

Does the primary cell

- The primary cell model is very useful. With the correct peak state, a person can 'see' markers for various diseases inside the primary cell.
- Using regression with trauma healing (EFT, WHH, EMDR etc.) changes the primary cell.
- Example: MPD can be seen in the primary cell to occur in about 70% of our students. This is caused by problems in the formation of consciousness at the earliest developmental stages.



Nuclear core (inside nucleolus)

(The ring is shown in a cutaway view
The merkaba is suspended inside the center of the ring)

Applications

- Using these models allows new, simple, non-drug ways to understand and heal diseases; as well as give people ‘peak states’ and ‘peak abilities’.
- Our clinics are intended to showcase these applications.
- We use ‘pay for results’ in our clinics; therapists who license our technology also agree to this.
- Our current research projects are autism, MS, OCD, and diabetes.

